

1979 CHRYSLER
NEW YORKER

Fifth Avenue Edition.
The
Ultimate
Chrysler.



Fifth Avenue Edition.

The most exclusive
Chrysler
you can own.

You are looking at the finest luxury automobile we make. The 1979 Chrysler New Yorker Fifth Avenue Edition.

It is the result of the considerable efforts and expertise of our designers, engineers, and stylists. The Fifth Avenue Edition's numerous features make it the prestige car among our fine Chrysler automobiles.

In appearance, the Fifth Avenue Edition's elegance speaks for itself. Here is a luxury



car that looks as striking on the highway as it does in the driveway. Elegant touches are apparent everywhere. From concealed headlamps to the subtle two-tone Designer's Cream-on-Beige paint treatment; from the unique landau roof with specially lighted quarter windows to the classic wire wheel covers. All standard.

There is even a one-of-a-kind pentastar hood ornament. A dramatic reminder that



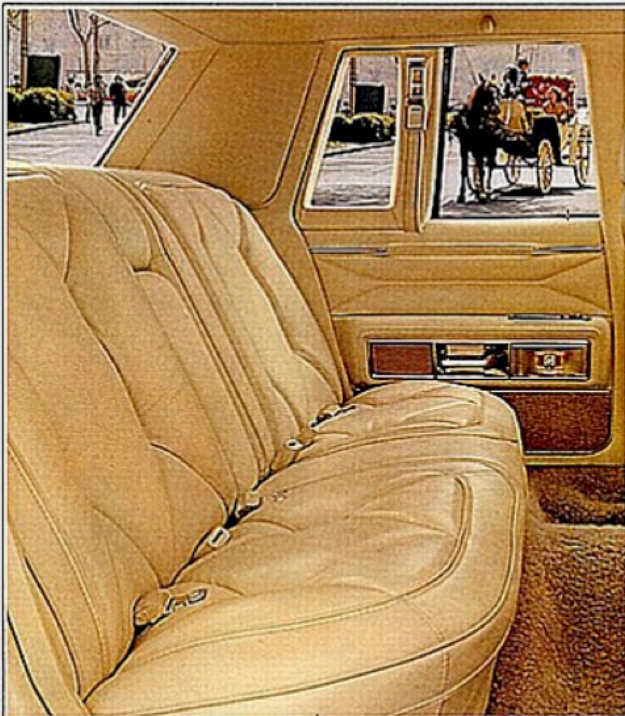
this is Chrysler's most exclusive automobile.

And the ride, we feel, is as smooth as any car we have ever made; the list of standard driving conveniences the most impressive. TorqueFlite automatic transmission. Power front disc brakes. Power steering. Power windows. Push-button reset trip odometer. The list goes on and on.

The 1979 New Yorker Fifth Avenue Edition. The ultimate Chrysler.

Fifth Avenue Edition 4-Door Pillared Hardtop.

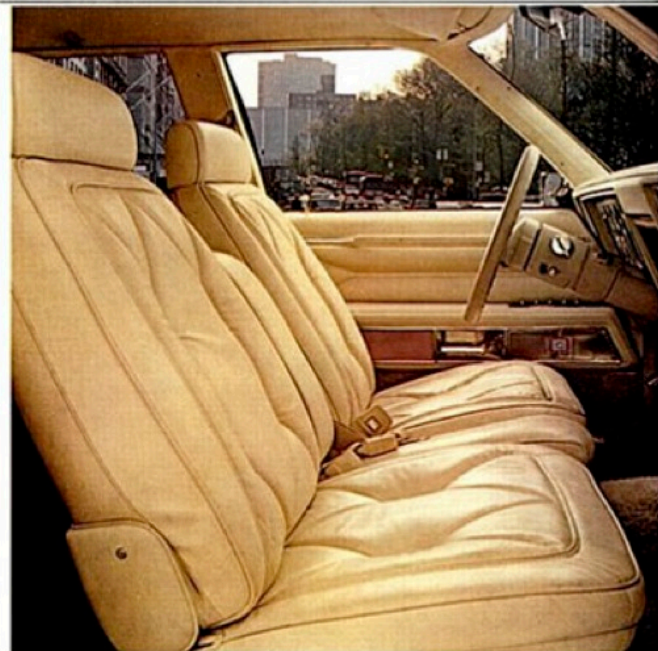
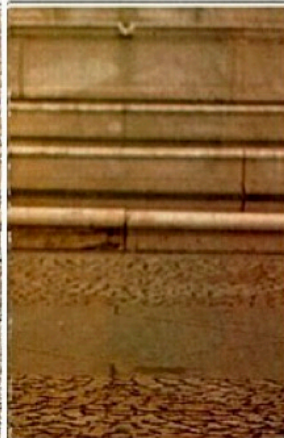
Some models may vary. See your dealer for details.



The lush look of champagne leather is evident in the Fifth Avenue Edition's rear area. Back seat comes with a fold-down center armrest, door-assist handles, reading lamps, and assist straps. And, there is over five feet of spacious shoulder-room for rear-seat passenger comfort.



The owner of a Fifth Avenue Edition can expect three things from the interior of this exceptional automobile. One, it will be superbly comfortable. Two, it will have the finest coverings and materials Chrysler has available. Three, it will be exclusive. No other car—not even another Chrysler—will be appointed in exactly the same way.



If you have a taste for luxury, you will love being inside the Fifth Avenue Edition. A unique champagne environment surrounds you. Quietly. Elegantly. And comfortably. The individual 60:40 front seats are of supple champagne leather and vinyl. The passenger-side seat-back reclines to a number of positions.



The Fifth Avenue's color-coordinated theme extends to the driftwood applique on the instrument and door trim panels. The leather-wrapped tilt steering wheel with inlaid pentastar medallion. And underfoot, the thick 20-ounce cut-pile carpeting. End result? An exclusive new definition in luxury-car appointments.



New Yorker.
The most fabulous
New Yorker
of them all.

Chrysler introduces a new era in comfort and engineering: The 1979 New Yorker. A new look in Chrysler luxury.

Overhead, there's a Laredo-grain landau roof with rear door opera windows and lights. In back, a full-width taillamp effect. Up front, concealed headlamps.

Other exterior highlights include body-side and hood-accent stripes, color-keyed door handle inserts, and new wheel covers.



Inside, the New Yorker indulges you in luxury. In addition to its quiet ride, it has soothing chimes instead of buzzers. Quiet-type door latches. Plus a generous application of sound insulation. All standard.

Other standard luxury features include power windows. Digital clock. Door courtesy lights. Tinted glass in all windows. And flag-type outside mirrors.

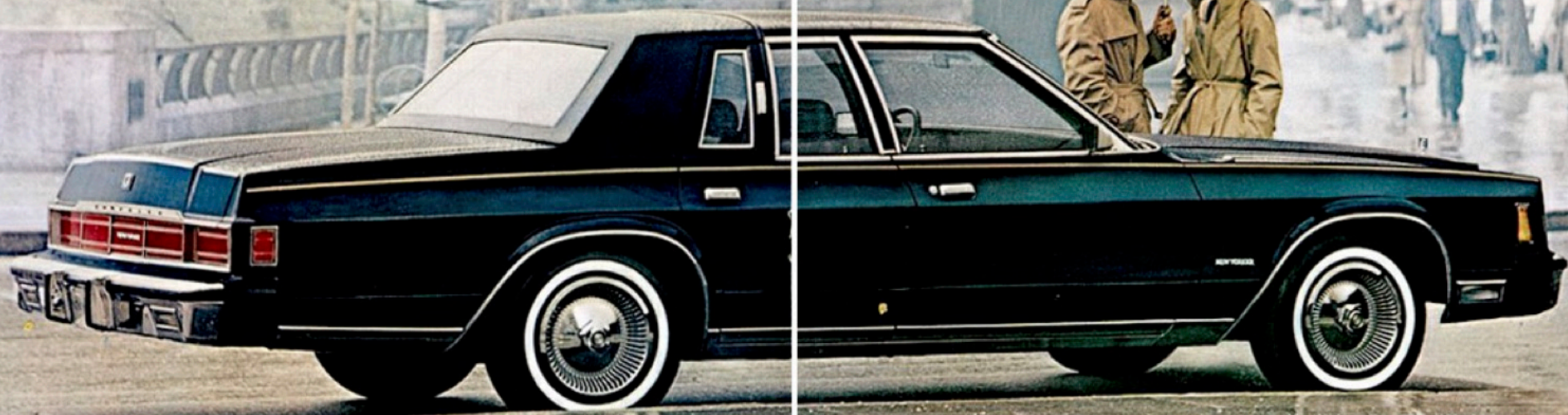
New Yorker knows how to perform. A



proven 360 2 bbl. V-8 engine is teamed to a TorqueFlite automatic transmission. Front disc brakes and steering are power-assisted.

To soften the bumps . . . torsion bars and an anti-sway bar up front . . . leaf springs and revised suspension geometry in the rear. If you would prefer more road feel, order the optional Open Road Handling Package.

The 1979 New Yorker. The most fabulous New Yorker of them all.



New Yorker 4-Door Pillared Hardtop



When people talk about plush interior luxury, one material immediately springs to mind: real leather. The New Yorker offers you the option of enjoying leather seating with front and rear folding center armrests, passenger-side recliner, and individually adjustable front seats. This seating is available in midnight blue, teal green, gray, cashmere, and red. You can also have rich white leather and vinyl with either midnight blue, teal green or red interior accents. No matter what color you choose, optional color-keyed floor mats will help add that final touch.



There is a new world of Chrysler roominess and luxury awaiting you in the 1979 New Yorker. Though it is leaner and trimmer than last year's model, the New Yorker still remains a car that is roomy enough for six adults. In fact, there is about the same amount of interior room as compared to last year's model. Plus a large flat-floor trunk capable of stowing 21.3 cubic feet of luggage.



Standard interior. Cloth-and-vinyl bench seats feature folding center armrests both in the front and the rear. The standard 60/40 front seats are individually adjustable, and the passenger's seat-back also has an adjustable recliner. Available in five colors: midnight blue, teal green, gray, cashmere, and red.



Quite simply one of the handsomest, easiest-to-use instrument clusters you'll ever see. The panel is set off by rich, simulated woodtone accents. Gauges supply information on oil pressure (gauge plus light), engine temperature, alternator, and fuel. Another New Yorker feature: the turn-signal lever has integral headlamp dimmer and windshield washer/wiper controls. For even more convenience, add optional intermittent windshield wipers.



Popular Chrysler Options



1. Travel to your own theme music by selecting the AM/FM stereo with 8-track tape. Or listen to the sounds of AM or FM on 4 speakers.

2. This convenient storage/litter pocket is an ideal place to stow personal belongings.

3. Let the lady in your life enjoy the advantages of a lighted vanity mirror with dual level lighting. It's located on the passenger-side visor.

4. To help keep snow, fog, and frost from accumulating on your rear window, you can order an electrically heated rear window defroster. A handy control is located on the instrument panel.

5. The ultimate in Chrysler radios. The sophisticated AM/FM stereo with Electronic Search Tune offers precise station selection and eliminates manual tuning. It has 10-station electronic memory and three different search modes: AM, FM, and FM stereo. You can activate the search feature via a push-button or a foot switch.

6. New semi-automatic temperature control and manual air-conditioning systems are now available on the New Yorker. They feature 26% greater capacity than last year. Plus quieter performance, faster cool-down rates and six outlets. Either system is a splendid way to keep cool during hot-weather driving.

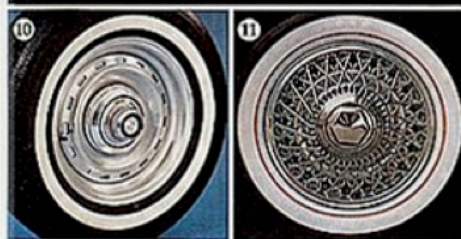
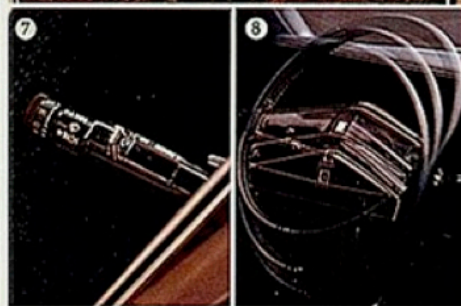
7. You can add even more convenience to the many wonders performed by the integral headlamp dimmer, windshield washer control, turn-signal lever by ordering automatic speed control. With it, you can set your desired speed and then forget it. Great for vacation travel. The intermittent wiper option can also be added.

8. A tilt wheel can help you slip in and out of your New Yorker with ease. It adjusts to six positions.

9. If you should require more power to make life easier, consider these power options: seats, door locks, radio antenna, sun roof, and trunk-lid release. They'll help add extra driving enjoyment.

10. A taste for the sporting life? Look at these styled aluminum road wheels.

11. These standard Fifth Avenue Edition wire wheel covers are optional on the New Yorker.



Options Check List

- Air conditioning—manual control
- Semi-automatic temperature control
- Axle—Sure-Grip Differential
- Axle ratio—2.7
- Basic Group Package
- Battery—500-amp. Long-Life
- Defroster—rear window—electrically heated
- Emissions Control System & Testing
- Fifth Avenue Package
- Floor mats—color-keyed, accessory
- Gas cap—locking
- Light Package (std. Fifth Ave. Package)
- Lights—cornering
- Litter container
- Mirror, remote-control—right
- Mirror—vanity—illuminated
- Moldings: door-edge protectors
- Body side with vinyl insert
- Pedal dress-up
- Power antenna (not available with CB radios)
- Power door locks
- Power deck-lid release—electric, with trunk light
- Power seats—left 6-way
- AM radio
- AM/FM radio
- AM/FM stereo radio w/8-track stereo tape, w/4 speakers
- AM radio w/10-channel CB transceiver and tri-band antenna
- AM/FM stereo radio w/40-channel CB transceiver and tri-band antenna, w/4 speakers
- AM/FM stereo radio, w/4 speakers
- AM/FM stereo radio with Electronic Search Tune, 4 speakers
- Rear speaker, single (monaural radio only)
- Speed control—automatic
- Spare tire, conventional
- Steering wheel: tilt w/2-spoke and woodtone insert in rim (NA Fifth Ave. Pkg.)
- Tilt, 2-spoke leather covered (std. Fifth Ave. Package)
- Luxury 3-spoke leather covered (NA Fifth Ave. Package)
- Sun roof, glass (power operated)
- Suspension—Open Road Handling Pkg.
- Heavy-duty suspension—includes HD shock absorbers, front and rear and HD rear springs
- HD shock absorbers
- Heavy-Duty (Trailer-Assist) Package
- Tires: P205/75R15" glass-belted radial-ply whitewall
- P205/75R15" steel-belted radial-ply wide whitewall
- P225/70R15" steel-belted radial-ply blackwall (available only with Open Road Handling Pkg.)
- P225/70R15" steel-belted radial-ply wide whitewall (available only with Open Road Handling Pkg.)
- Undercoating
- Wheel covers—premier
- Wheels, wire (std. Fifth Ave. Pkg.)
- Wheels, road—styled aluminum
- Wheels, road—styled aluminum with trim rings
- Windshield wipers, deluxe with intermittent wipe



Here's a trunk designed for the finest in luggage. With room for 21.3 cubic feet of stowable items. Another New Yorker personal touch is the standard trunk dress-up that consists of black carpeting and a spare tire cover.

Standard Specifications

Engine:	360-2	8 cyl.
Transmission:	TorqueFlite Automatic	
Suspension:	Torsion bars front, leaf springs rear, and front anti-sway bar	
Brakes:	Front, disc; drum, rear (power assisted)	
Electrical System:	Battery: 430 ampere Maintenance-Free Alternator: 65 ampere	
Fuel Tank:	21 gallons	

Engines—Transmissions—Axles

Engine (All except California)	Transmission	Axle Ratios
318-2 8 cyl. (NC)	TorqueFlite	2.4 ²
360-2 8 cyl. (S)	TorqueFlite	2.4 ²
360-4 HD 8 cyl. (O) ¹	TorqueFlite	3.2
California Emissions Control System and Testing Required. (Also available in states other than California.)		
360-4 8 cyl (O)	TorqueFlite	2.7
360-4 HD 8 cyl (O) ¹	TorqueFlite	3.2

O=Optional ¹=Requires Heavy-Duty Package (Ballin-Assist)
²=Optional 2.7 ratio for hilly terrain NC=No Charge S=Standard

Tire Availability

Tire Size	Type	Sidewall	
P205/75R15	Glass-Belted Radial	Black	S
		White	O
P205/75R15	Steel-Belted Radial	Wider White	O
P225/70R15 ¹	Steel-Belted Radial	Black	O
		Wider White	O

S=Standard O=Optional
¹=Available with Open Road Handling Package only

Colors



NOTE: Due to occasional printing irregularities, the colors shown may vary from actual hue. See your Chrysler Dealer for accurate color chips.

Standard Safety Features

Safety-rim wheels • Combination lap-shoulder belts for the driver and right-front passenger, and lap belts for all other passengers • Energy-absorbing steering column • Dual braking system with separate brake-fluid reservoirs in the master cylinder for front and rear-wheel brakes • Brake-fluid pressure loss warning light (also serves as indicator when parking brake is applied) • Hazard warning flasher system • Turn signals with lane-change feature • Backup lights • Padded instrument panel and sun visors • Front-seat head restraints • Padded front seat-backs • Inside and outside rearview mirrors • Side marker lights and reflectors • Electric windshield washers and wipers • Light system circuit breakers with automatic reset • Wiring harness fusible link • Nonover-ride door locks (except driver's door) • Resilient window crank knobs • Side door beams • Dual throttle return springs • Interlocking door latches • Recessed inside door release handles • Fire-retardant interior materials • Rotary glove-box latch • Reinforced windshield header • Ball joint rearview mirror mount

Standard Equipment

Alternator—65 ampere standard
Armrests—Front door, rear doors and front and rear seat center-mounted folding-type
Ash Receivers—Front and rear
Battery—325 amperes (430-ampere Maintenance-Free battery standard with 360 V-8s only)
Battery Test Indicator
Belts, Safety—Color-keyed
Brakes—Front, disc; drum, rear (Power assisted)
Bumper Guards—Front and rear
Bumper Rub Strips—Front and rear
Carpeted Shelf Panel
Chimes, Warning—Seat belt, ignition key and headlamp "on"
Cigarette Lighter—Front and two rear
Cleaner Air System
Clock—Digital
Cloth-Covered Rear-Window Garnish Molding
Directional Signals with Lane-Change Feature
Electronic Voltage Regulator
Electronic Ignition
Flashers, Hazard Warning
Floor Covering—Color-keyed shag carpet in passenger compartment
Fuel Tank—21 gallon
Gauges—Oil pressure with warning light, temperature, alternator and fuel
Glass, Tinted—All windows
Glove Box Lock
Head Restraints—Right and left
Heater and Defroster—High-low type
Hood Release, Inside
Hood Silencer Pad
Horns, Dual
Lights—Brake system warning, transmission selector lever quadrant, front side marker lights, rear side marker lights, backup lights, front door switches for interior lights, door courtesy lights, and rear-seat reading lights
Mirrors—Inside rearview, day/night
—Outside, flag-type remote left and manual right
Molded Cloth-Covered Headliner, color-keyed
Power Disc Brakes
Power Steering
Power Windows
Steering Wheel—Luxury three-spoke with soft center pad and woodtone rim insert.
Stripes, body side and hood
Suspension—Torsion bars front, leaf springs rear and front anti-sway bar
Tires—P205/75R15 Glass-belted radial, black sidewall
Tire, Spare—Compact
Transmission—TorqueFlite, automatic, 3-speed
Turn-Signal Control Lever with integral headlamp dimmer control and windshield wiper control
Vinyl Roof
Wheel Covers, Deluxe 15"
Windshield Wipers, 2-speed with electric washers

Optional Packages

Light Package: (Included in Basic Group Pkg): Deck-lid ajar light • Rear-door courtesy and door-ajar warning light • Illuminated hood release and parking brake release • Low battery light-emitting diode • High engine temperature light-emitting diode • Low washer fluid light • Low fuel light-emitting diode • Trunk light • Glove box light • Ash receiver light • Ignition switch light with time delay • Fender-mounted turn signal indicators

All product illustrations and specifications are based on authorized information. Although descriptions are believed correct at publication approval, accuracy cannot be guaranteed. Some of the equipment shown on product illustrations is optional, at extra cost. Chrysler Corporation reserves the right to make changes from time to time, without notice or obligation, in prices, specifications, colors and materials, and to change or discontinue models.

Basic Group Package: AM/FM Radio • Standard-size WSW tires • Remote outside mirror, right • Light Package • Air conditioning, manual • Intermittent windshield wipers • Vinyl body-side molding • Undercoating
NOTE: Auto-temp air conditioning, radios, WSW tires, may be upgraded.

Heavy-Duty (Trailer-Assist) Package and Open Road Handling Package available. See your dealer for details.

Two-Tone Package (Includes accent stripes at Two-Tone Paint Breaks) Available in:

Upper Color	Lower Color	Accent Stripes
Frost Blue Met.	Ensign Blue Met.	Med. Blue & Blue
Teal Frost Met.	Teal Green Sunfire Met.	Dk. Green & Lt. Green
Dove Gray	Oxford Gray	Red & Gray
Regent Red Sunfire Met.	Garnet Red Sunfire Met.	Gold & Dark Red

"Fifth Avenue Edition" Package Exterior: Unique two-tone paint, Designer's Cream upper/Designer's Beige lower • Medium Beige accent stripes on hood center form and two-tone paint break • Light Beige Laredo-grain padded vinyl landau roof, quarter window applique and roof moldings • Special edge-lighted quarter window with "Fifth Avenue" nomenclature (standard New Yorker opera lamps deleted) • Special front fender louver applique • Unique pentastar hood ornament and trunk lock cover • Color-keyed bumper guards and bumper protection rub strips

Interior: Unique champagne environment including seats, garnish moldings, instrument panel crash pad, package shelf, headlining and 'C' pillar trim • Light Champagne leather 60/40 split-bench seat and door trim panels • Driftwood applique on instrument panel and door trim panels • Unique 20-oz. cut-pile carpeting • Unique pentastar steering wheel center for standard leather-wrapped tilt steering wheel

Chassis: Premium P205/75R15 Aramid-belted radial tires with white sidewalls and gold accent stripe • Wire wheel covers • Light Package

Exterior Dimensions

Wheelbase	118.5"
Overall Length (includes bumper guards)	221.5"
Overall Width	77.1"
Overall Height	54.5"
Track, Front	61.9"
Rear	62.0"

Interior Dimensions

Headroom,	Front	38.6"
	Rear	37.4"
Legroom,	Front	42.3"
	Rear	38.2"
Hiproom,	Front	57.6"
	Rear	58.2"
Shoulder-room,	Front	60.2"
	Rear	60.1"
Cargo capacity (estimated)		21.3 cu. ft.

Buy or Lease a Chrysler New Yorker



